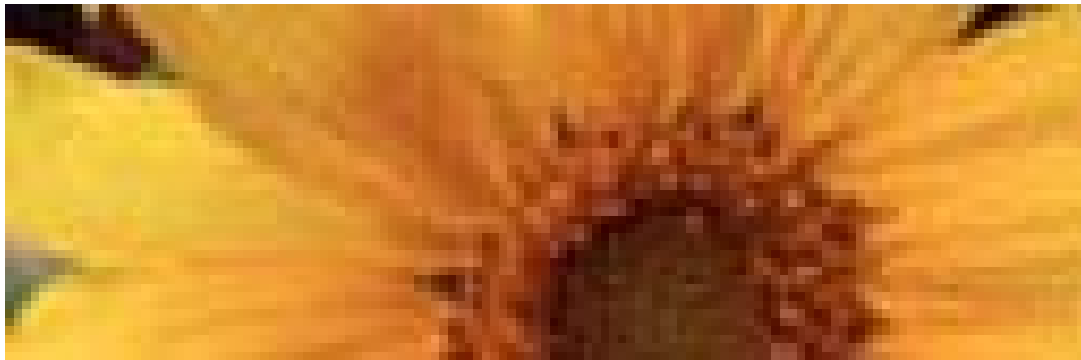


COMOX VALLEY HOSPICE SOCIETY

Friends for Life



RESIDENTIAL HOSPICE PROJECT OVERVIEW SEPTEMBER, 2009

Executive Summary

Comox Valley Hospice Society (CVHS) is leading the community's efforts to build a ten-bed residential hospice, a place where palliative patients can be cared for in a warm, supportive environment during their final days allowing them to live each day to the fullest until they die.

A residential hospice is a home-like care facility that provides quality, comprehensive 24-hour care to dying patients who are unable to receive the necessary care and support in their home or, for whatever reason, opt for care in a facility. While the hospice philosophy embraces patient as the determinant of the type of care received, care and support for families and loved ones is also key component. The goal of hospice palliative care is, to the greatest extent possible, to preserve a dying person's comfort, dignity and quality of life and to provide support to their loved ones who must go on with their lives forever changed. This holistic, non-denominational approach encompasses the physical, psychological, social, spiritual and practical aspects that are important to both the patient and the family.

"The dying need the care of the heart; they also need the best that medicine has to offer; on its own, neither is enough."

Dame Cicely Saunders

Founder of the modern hospice movement

Over 90 percent of people say that they would prefer to die at home, in comfortable and familiar surroundings. In reality, 60 percent of deaths from illness and chronic conditions occur in an acute hospital setting. The 40 percent of people who die at home in BC could be eligible to receive a maximum of four hours of home care support per day, provided by the Vancouver Island Health Authority. The emotional and financial responsibility of providing care for the other 20 hours a day often results in exhaustion and stress for the family, compounding the worry and grief that they are experiencing in anticipation of losing a loved one. And, the emotional and financial cost to the community, employers and the traditional medical system is significant when these concerns are not addressed.

For many people who are dying and who cannot or choose not to remain at home, the high level of acute care in hospitals is not appropriate or cost effective. Residential care is inaccessible due to long waiting lists for admission and, due to the lack of a hospice palliative care programming, is also woefully inadequate. With no other options for end-of-life care in the Comox Valley, many palliative patients are admitted to hospital, occupying acute care beds. This creates funding shortfalls for the hospital and results in backlogs of patients who need acute care but cannot be admitted because no bed is available. The cost of residential hospice care is about one third (33 percent) that of hospital acute care.

Providing the right care at the right time, in the right setting, by the right provider and *at the right cost* meets the needs of patients, family and friends, and the health authority. As outlined in the BC Ministry of Health's 2006 BC Framework for End of Life Care, residential hospices are a key part of the picture.

CVHS needs to raise an estimated \$3million to fund the construction of a ten bed residential hospice in the Comox Valley. To date, CVHS has raised in excess of \$250,000 without the launch of a formal capital fundraising campaign. In keeping with the campus model of care endorsed by the Vancouver Island Health Authority, a memorandum of understanding has been executed with Glacier View Lodge Society (a valley long term care facility) to build a residential hospice on their expansive campus which equates to an additional value to the project of \$600,000.

The ultimate vision is to provide high quality, cost effective hospice palliative care in an optimally appropriate setting through an innovative and sustainable operational collaboration between the Comox Valley Hospice Society (CVHS), the Glacier View Lodge Society (GVLS) and the Vancouver Island Health Authority (VIHA).

Specifically, the Comox Valley Hospice Society would, through donations, raise the money to fund the building of the facility. CVHS would submit a proposal for operational funding to VIHA to support an operational contract with the Glacier View Lodge Society for the provision of many clinical and support services presently funded by VIHA. Included in the physical plant would be administrative space for CVHS, volunteer and community training facilities and space to provide grief and bereavement support to families and loved ones which are financially sustained through CVHS fundraising efforts.

This visionary collaboration would, in fact, facilitate provision of the appropriate and high quality end of life care that has been endorsed by the BC Ministry of Health. This collaboration would also serve to leverage the tremendous commitments and resources of the local community including capitalizing on the use of well-trained and supervised volunteers. CVHS volunteers alone have donated in excess of \$1million (using a factor of \$16/hr) to our local health care delivery system for the provision of end of life care over the past five years! And, the demand for our services is growing by more than twenty percent (20%) annually.

In summary, it is clear that residential hospice palliative care can be provided at approximately one-third (33%) the cost of acute care as demonstrated in other health authorities throughout the province (eg, Fraser Health Authority and Interior Health Authority).

CVHS is committed to making this a reality for the Comox Valley. Challenging fundraising goals have been set to help us reach this goal by 2012—the time frame identified by VIHA for the provision of non-acute hospice palliative beds for the north island.

Those communities in BC that have shown through action that they want to have a residential hospice, now have one. Comox Valley Hospice Society is leading the community's efforts to secure appropriate options for end-of-life care for our residents and their loved ones.

CONTACT INFORMATION

MAUREEN SWIFT

PRESIDENT

COMOX VALLEY HOSPICE SOCIETY

2137 COMOX AVE

COMOX, BC

V9M 1P2

V: 250.339.1211

E: SWIFTIES@SHAW.CA

TERRI ODENEAL, MSN, RN

EXECUTIVE DIRECTOR

COMOX VALLEY HOSPICE SOCIETY

2137 COMOX AVE

COMOX, BC

V9M 1P2

V: 250.339.5533

E: CVHS1@TELUS.NET